



LINEA DETTAGLI D'ARTE

# Stucco veneziano

Rivestimento decorativo lucido per interni

Glossy decorative coating for interiors

made in italy

*Emozioni decorative*

Decorative emotions

**san marco**  
SISTEMI VERNICIANTI PER L'EDILIZIA





1652



1684



4032



1668



1686



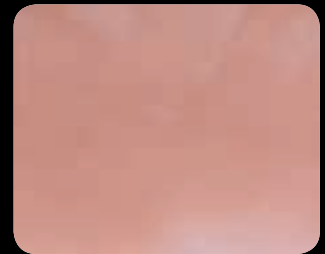
1835



1669



4247



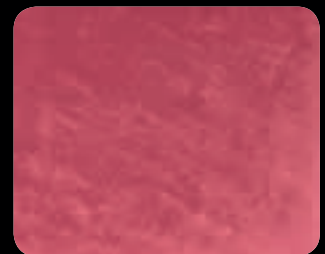
1854



1124



1795



4130



1718



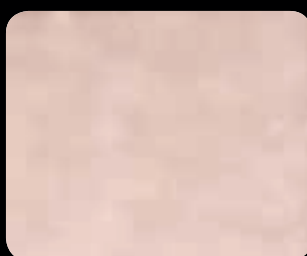
1780



4128



1709



1845



4126



4150



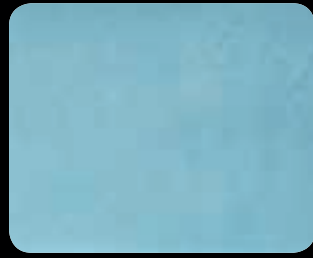
1964



2125



4153



2004



2134



4147



1996



2138



1003



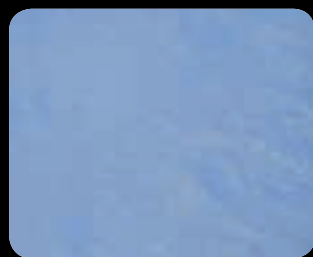
4180



4212



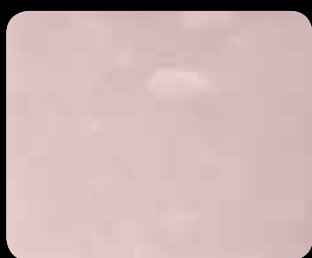
1002



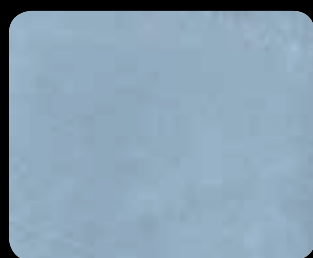
1932



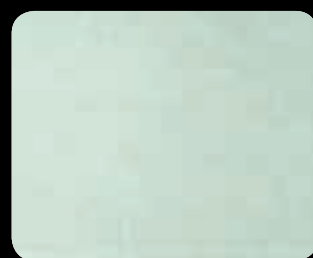
2075



4042



4186



1305

# Stucco veneziano



4011



1329



4081



4190



1678



1611



4102



4434



1727



1170



4115



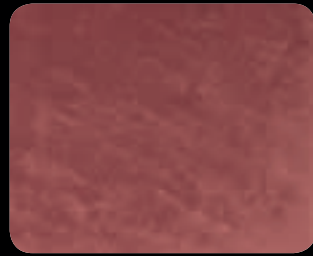
4077



4250



1632



4261



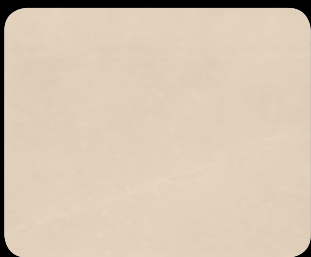
1518



1629



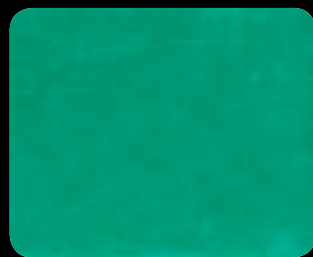
4249



4007



1345



4215

# Stucco veneziano

## Rivestimento decorativo lucido per interni

Lo spirito creativo anima gli spazi. Elegante finitura a stucco, ricrea ambientazioni nobili che ricordano gli antichi palazzi aristocratici di Venezia. Decorativo che proviene dalla tradizione, sempre di moda per la varietà di declinazioni e dai colori lussuosi. Caratterizza tutti gli spazi. Dinamismo e classicità per uno stile senza tempo. Stucco veneziano viene applicato generalmente in almeno 3 strati, con una resa indicativa di 1-1,4 kg/m<sup>2</sup> a finire su intonaco civile e di 0,4-0,6 kg/m<sup>2</sup> a finire su superfici lisce come gesso e cartongesso.

Attrezzi: frattazzo inox, spatola in acciaio.

## Glossy decorative coating for interiors

A creative spirit enlivens the spaces. An elegant stucco finish recreates the noble atmosphere of the old aristocratic palaces of Venice. Decorative finish based on tradition, but which is always fashionable thanks to the choice of deluxe colours and extensive possibilities of use. It becomes a distinctive feature of any room. Dynamism and classicism for a timeless stylishness.

Stucco veneziano is normally applied in at least three coats, with an indicative spreading rate of 1-1.4 kg/m<sup>2</sup> on civil plaster; 0,4-0,6 kg/m<sup>2</sup> as a finish on gypsum and gypsumboard.

Tools: steel trowel, putty knives.

## Effetti - Effects



**Effetto intarsio** - Decorazione ottenuta applicando uno strato di Stucco veneziano bianco a frattazzo; lavorazione da bagnato con rullo per decorativi in silicone. Finitura con Velature (A641).

**Inlaid effect** - Decoration obtained by applying a layer of white Stucco veneziano with a trowel; wet application with roller for decorative finishes in silicone. Finish with Velature (A641).



**Effetto con riflessi** - Decorazione ottenuta applicando uno strato di Stucco Veneziano bianco a frattazzo; lavorazione da asciutto con frattazzo. Finitura con Abc riflessi oro a frattazzo.

**Reflex effect** - Decoration obtained by applying a layer of white Stucco Veneziano with a trowel; dry application with plastering trowel. Finish with Abc riflessi oro with a plastering trowel.



Colorificio San Marco SpA  
Via Alta 10 - 30020 Marcon (VE) - Italy  
Tel +39 041 4569322 - Fax +39 041 5950153  
e-mail: [info@san-marco.it](mailto:info@san-marco.it)  
[export@san-marco.it](mailto:export@san-marco.it)  
[www.san-marco.it](http://www.san-marco.it)  
[www.emozionidecorative.it](http://www.emozionidecorative.it)

COMPANY WITH  
QUALITY SYSTEM  
CERTIFIED BY DNV  
= ISO 9001 =